

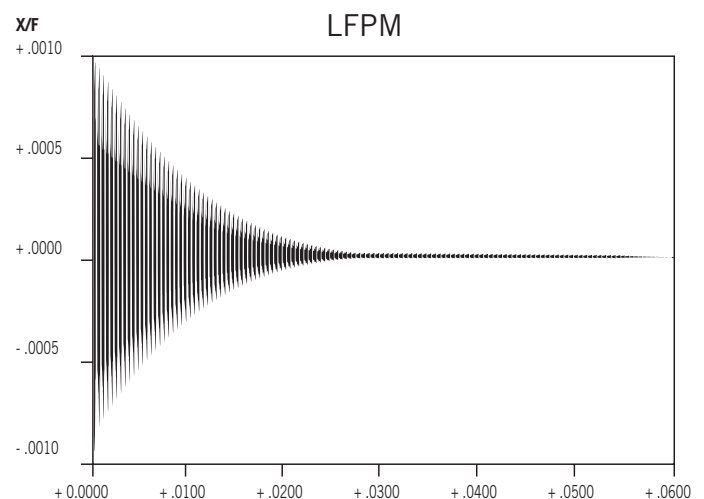
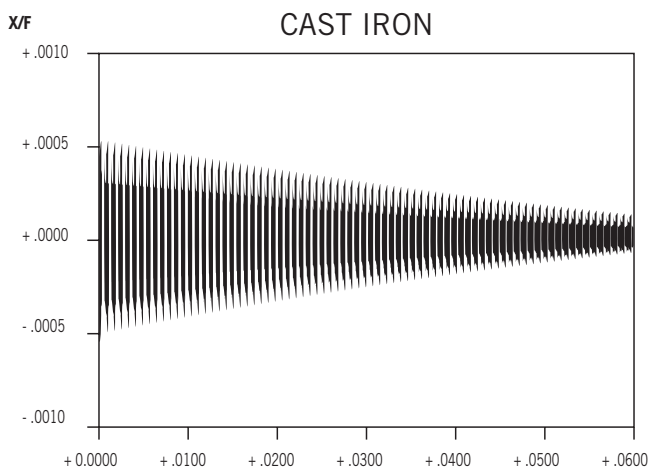
SLIDE
TECH
PRECISION SLIDEWAYS
& SCREW ASSEMBLIES

LOW FRICTION POLYMER MATERIALS

Established in 1983, Slidotech manufactures high precision, low friction slides, bearings and nuts. While Slidotech is known for emergency replacement of linear ways, bearings and screw assemblies, their expert technical knowledge and proprietary methods are commonly used by machinery builders requiring custom low friction surfaces and bearings.

Benefits of Slidotech's Low Friction Polymer Materials (LFPM)

- ≡ High load/high compression strength. 19,000 PSI.
- ≡ Low Friction. Documented coefficients of friction from 0.050 to .115.
- ≡ Deadens vibration and noise. Vibration attenuation 25 times better than steel.
- ≡ Non seizing machine failures. Predictable use and wear.
- ≡ Tough and solid in wicked environments. Resists most contaminants, coolants and wash downs.
- ≡ High Temperature LFPM available. Can withstand up to 400 deg F surface temperature.
- ≡ Precision/Accuracy. Zero Shrinkage and Mirror Image capability replicates mating surfaces.
- ≡ White LFPM available.
- ≡ High Shock Loads.
- ≡ LOW COST. LFPM solutions are a low cost option for Emergency or Designed Applications.
- ≡ NO LUBE.



SLIDENUTS

- ≡ **High Efficiency Nuts.** Can be up to twice as efficient as traditional bronze nuts.
- ≡ **Customizable.** Can make housings to any shape, material or mounting configuration.
- ≡ **Accurate.** Up to 4 times more accurate and less clearance than bronze nuts.
- ≡ **NO NOISE.** SlideNuts deaden noise, don't squeal and have no ball chatter.
- ≡ **Flexible.** Can be molded to any screw thread, diameter, pitch or lead.
- ≡ **NO LUBE.** Standard application requires no lubrication.

SlideNut

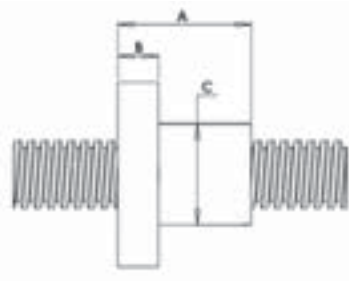
Size Thread	Nut Length A	Flange Length B	Nut OD C	Flange OD D	BCD	Bolt Holes Diameter (4)	Lead*	Load lbs Steel Housing	Alum Housing
1/4"	1.000	0.490	0.688	1.600	1.125	0.266	.200/.400	350	225
3/8"	1.000	0.490	0.688	1.600	1.125	0.266	.200/.400	700	525
1/2"	1.000	0.490	1.125	2.600	2.090	0.266	.200/.400	1250	925
5/8"	1.250	0.490	1.125	2.600	2.090	0.266	.200/.400	1950	1450
3/4"	1.500	0.610	1.125	2.600	2.090	0.266	.200/.400	2800	2100
7/8"	2.000	0.610	1.500	2.760	2.260	0.266	.200/.400	3800	2850
1"	2.000	0.610	1.500	2.760	2.260	0.266	.200/.400	5050	3750

Economy SlideNuts, Bearings and Shaft Supports

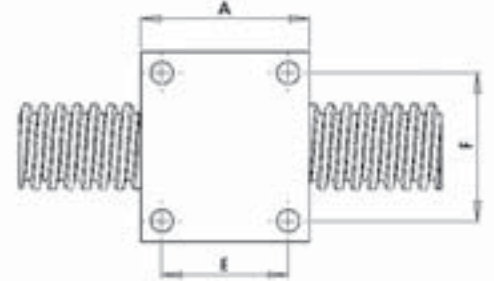
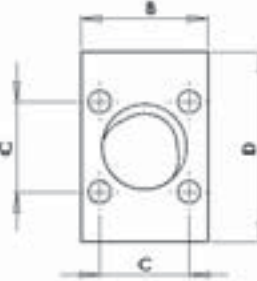
Thread or Shaft Size	A	B	C	D	E	F	Bolt Hole Diameters	Lead*	Load lbs.
1/4"	1.000	0.688	0.486	0.750	0.500	0.560	0.125	.200/.400	225
3/8"	1.000	0.688	0.486	0.750	0.500	0.560	0.125	.200/.400	525
1/2"	1.500	1.250	0.795	1.750	0.750	1.250	0.200	.200/.400	925
5/8"	1.500	1.250	0.795	1.750	0.750	1.250	0.200	.200/.400	1450
3/4"	1.500	1.250	1.061	2.000	0.750	1.560	0.200	.200/.400	2100
7/8"	2.000	1.500	1.061	2.000	0.750	1.560	0.266	.200/.400	2850
1"	2.000	1.500	1.061	2.000	0.750	1.560	0.266	.200/.400	3750

* 5 pitch is our standard and most economical lead. However, it can be made to any thread, pitch or lead.
Standard housing material: Aluminum

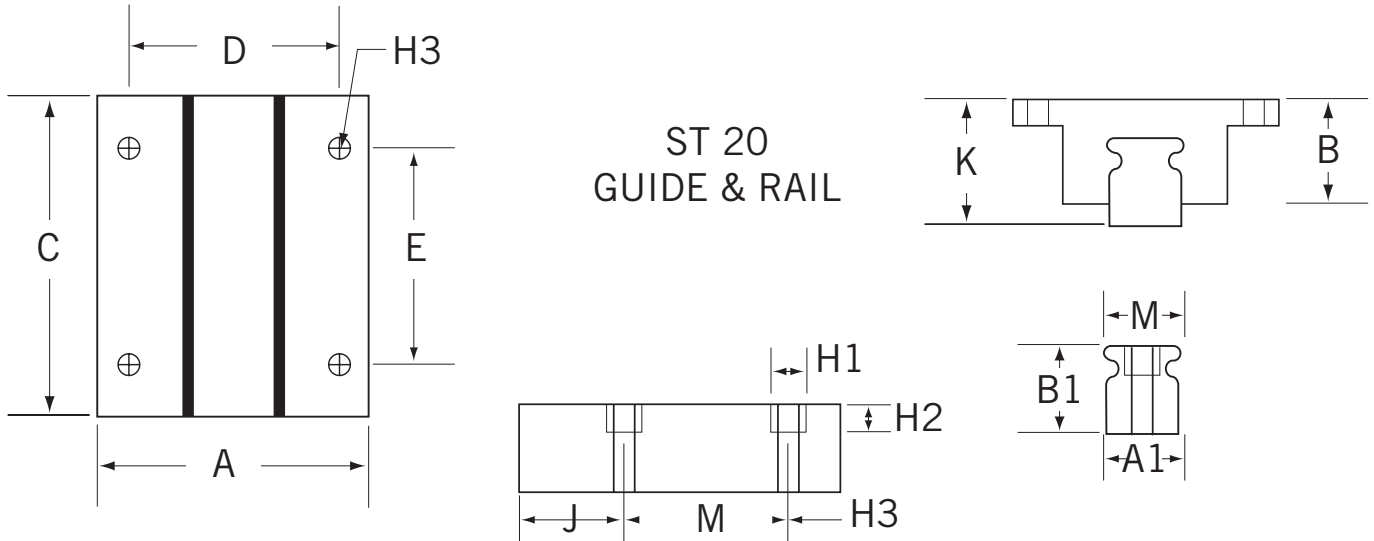
SlideNut Drawing



Economy SlideNut Drawing



SLIDETRUCK



A	B	C	A1	B1	C1	D	E	F	H1	H2	H3	J	K	M
2.482	.960	3.0	.78	.730	.862	2.00	2.00	.715	.33	.30	.202	1.0	1.181	2.00

Other Applications and Products

We can make the following products new or reconfigure for **EMERGENCY REPLACEMENT**.

- ≡ Profile Linear Bearings
- ≡ Round Shaft Bearings
- ≡ Square Shaft Bearings
- ≡ Spline Shaft and Nuts
- ≡ Polygon Shaft and Nuts
- ≡ Dove Tails and Linear Ways
- ≡ Machined Screws
- ≡ Vibration Dampening Machine Bases
- ≡ Low Friction Pads and Wear Surfaces